

POCKET CELLPHONE JAMMER WITH BAND SETTING

SJ-004

User Manual

Attention!

Read this Manual before using the Pocket Cellphone Jammer.

Contents

Introduction.....	3
Specifications	4
Features	4
Safety	5
Nomenclature	6
Getting Started	7
Charging the Battery	7
Discharge of Battery	7
Basic operation.....	8
Activation the jammer.....	8
Deactivation the jammer	8
Frequency setting	9
Preparation	9
Terminal program	10
Enter to settings.....	15
Jammer menu	16

Introduction

Pocket cellphone jammer is a device that prevents the operation of cellphones by radiating noise interference.

It will help you protect yourself from the threat of eavesdropping via cell phone (even when cellphone is switched off can listen to conversations at a distance of several meters).

The jammer has 2 separate channels designed to operate in **GSM-850/CDMA-850** or **GSM-900** (first channel) and **DCS-1800** or **PCS-1900/CDMA-1900/WCDMA-1900** or **WCDMA-2100** (second channel).

The user can reprogram the jammer to be used in any combination of these standards.

Specifications

Numbers of jamming channels:	2
TX frequency of channel 1:	820 ~ 980 MHz
TX frequency of channel 2:	1800 ~ 2200 MHz
Total output power:	0.5W
Number of frequency settings:	5
Cover Standards Channel 1:	GSM-850/ CDMA-850 or GSM-900
Cover Standards Channel 2:	DCS-1800 or PCS-1900/ CDMA-1900/ WCDMA-1900 or WCDMA-2100 (3G)
Jamming range:	up to 8 meters (the signal must $\leq 85\text{dBm}$ in the location)
Continue using time:	90 min
Battery:	3.6V (Li-Polymer cell)
Charger:	100-240VAC 50-60Hz / 5VDC 0.5A or PC USB
Dimensions:	105 x 70 x 25 mm
Weight:	125 g
Operation temperature:	-10...+55°C

Features

- ❖ Built-in antenna
- ❖ USB charging
- ❖ 2 separate channels
- ❖ Frequency setting by PC

Safety

Medical equipment. Do not use the jammer in a hospital because it can interfere medical devices operation. Do not use the jammer too close to personal medical devices, such as pacemakers and hearing aids.

Aircraft. Never use the jammer in an aircraft. It may be dangerous.

Blasting areas. Do not use the jammer in any area with a potentially explosive atmosphere such as refueling points, fuel depots, chemical plants or areas where blasting operations are in progress. The functioning of the jammer in such areas may interfere to operation of a technical installation. It may cause an explosion or fire.

Power supply. This device is intended be recharged only with the original charger or charging from a USB port. Other usage will invalidate any warranty given to this device and may be dangerous. The main voltage specified on the power supply unit must not be exceeded. To reduce risk of damage to electric cord, remove from outlet or from the jammer by holding connector rather than cord.

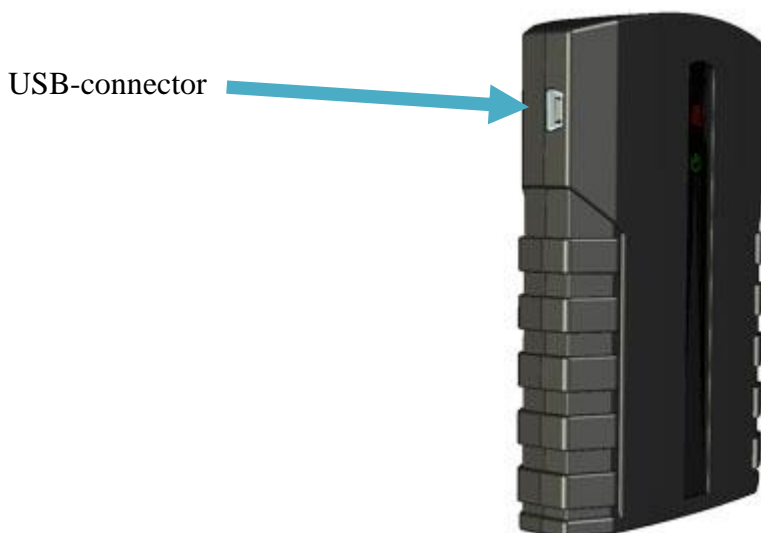
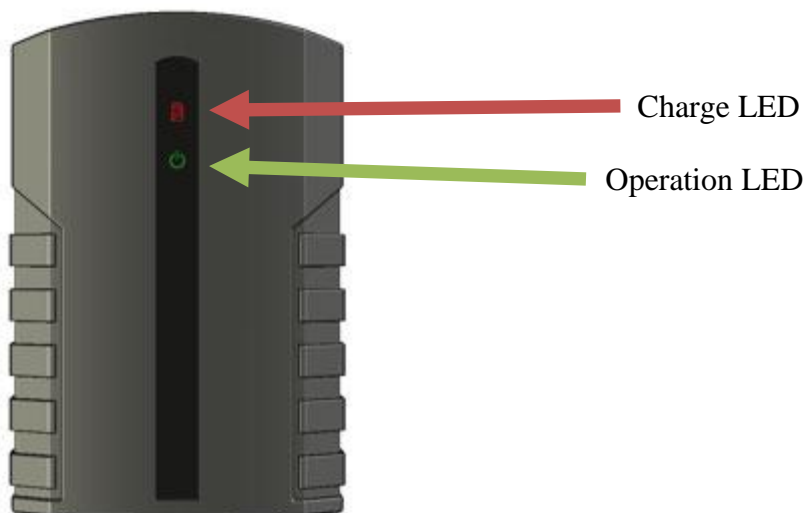
Electronic devices. The jammer can interfere with the operation of nearby electronic devices such as TVs, radios or PCs.

Battery. Never expose the battery to extreme temperatures (in excess of 60°C). Use only original battery and charger. You can risk damage to the product and your health.

Heating up. The device heats up when used for long periods (more than 30 minutes). This is normal and not dangerous.

Children. Keep away from children. Do not allow children to play with jammer. It is not a toy.

Nomenclature



Getting Started

Charging the Battery

Before using jammer for the first time, charge the battery fully. Insert the charging cable into the charger on the left side of the jammer. Plug the other end of the charging cable into the charger or connect to PC USB-connector. The red light on the jammer case indicates it is functioning.

For optimum performance charge the battery a minimum of 5 hours on the first charge. For reliable and long time performance, the battery must be fully charged and then emptied at least three times when new.

Charging time of empty battery is about 4 hours. When the battery is fully charged, the red light will blink every 2 seconds. The fully charged battery gives up to 90 minutes of operation time.

Discharge of Battery

When the battery voltage gets low, the jammer will operate until the possible discharge, but the red light will start blinking 20 minutes before the battery becomes fully exhausted.

*Notes: 1. The charger will heat up when used for long period.
This is normal and not dangerous.*

2. If you charge the jammer from PC USB-port do not forget that the charge will be interrupted when PC will be turned off.

Basic operation

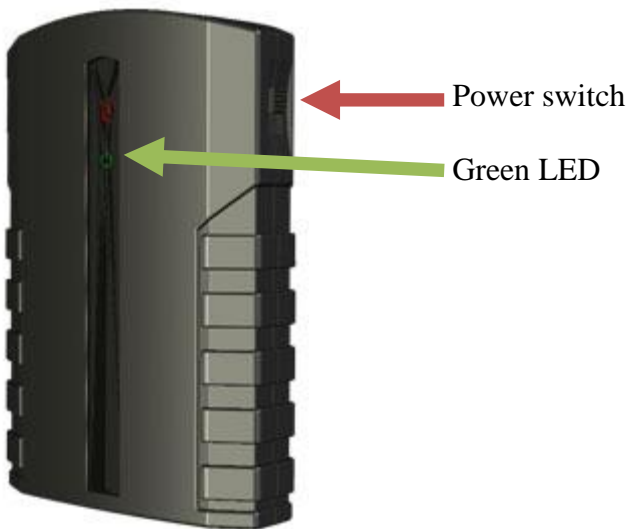
Activation the jammer

Shift the power switch up to activate the jammer. The green LED on the front of the jammer must blink every 3 second during operation.

For getting of the best performance, it is recommended to set up the jammer vertically.

Deactivation the jammer

Shift the power switch down to deactivate / turn off the jammer.



*Note: The jammer will heat up when used for long period.
This is normal and not dangerous.*

Frequency setting

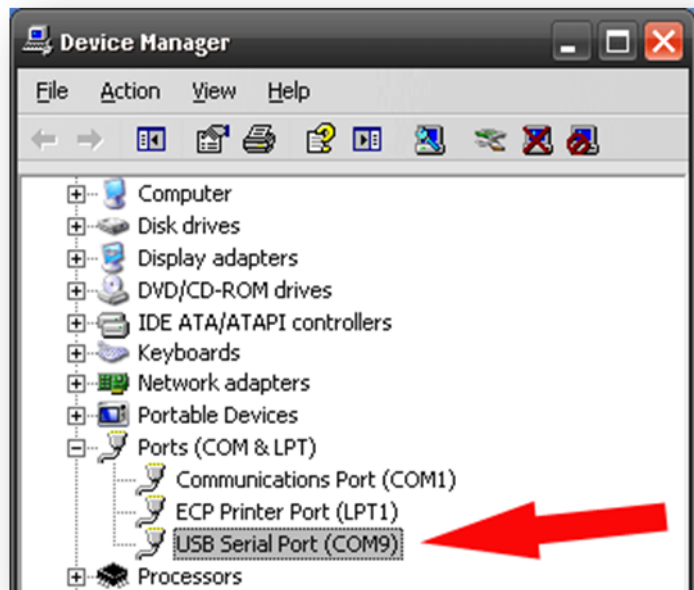
The Pocket Cellphone Jammer has two separate channels. It is possible to tune these channels to other frequencies. The jammer's firmware has several presets. The user can select desired presets to change frequency bands of the jammer.

Preparation

At first, it is necessary to install the driver from attached CD. Afterwards connect the **switched off** jammer to PC with charge cable. USB-icon will appear in tray (see picture).

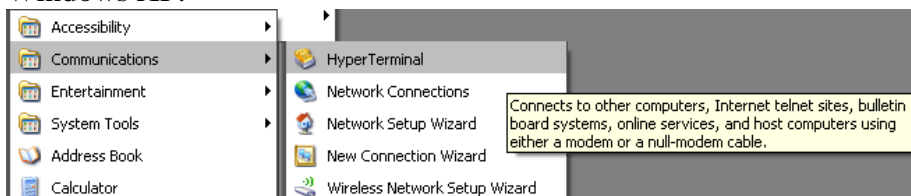


Now open Device Manager, see a new **USB Serial Port** and to keep in mind its number. (number 9 on picture below)

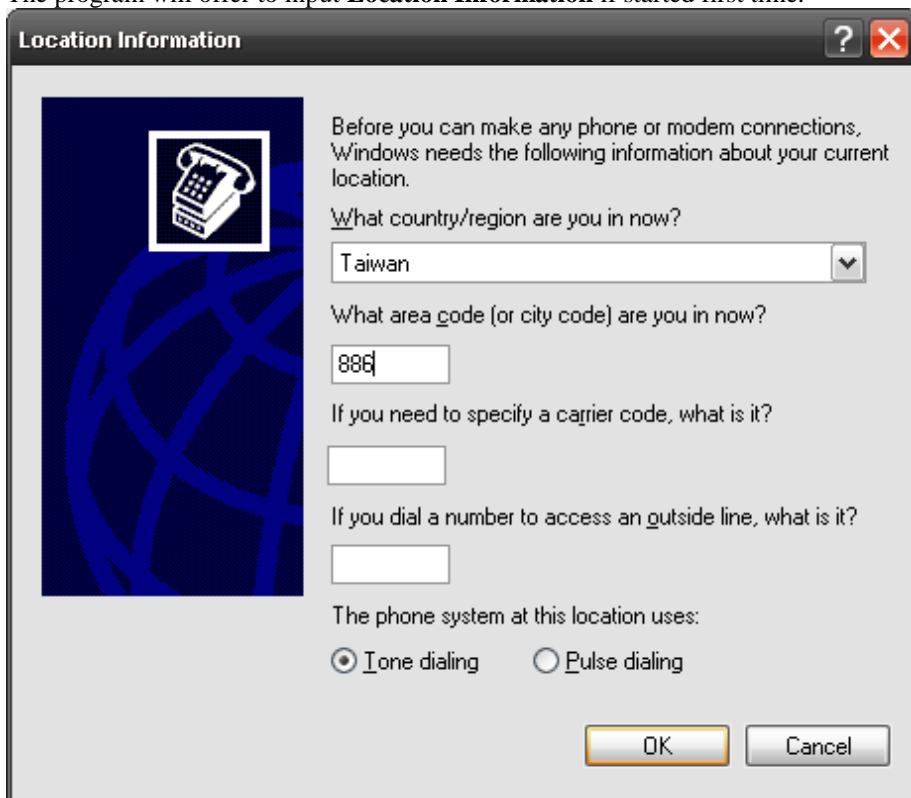


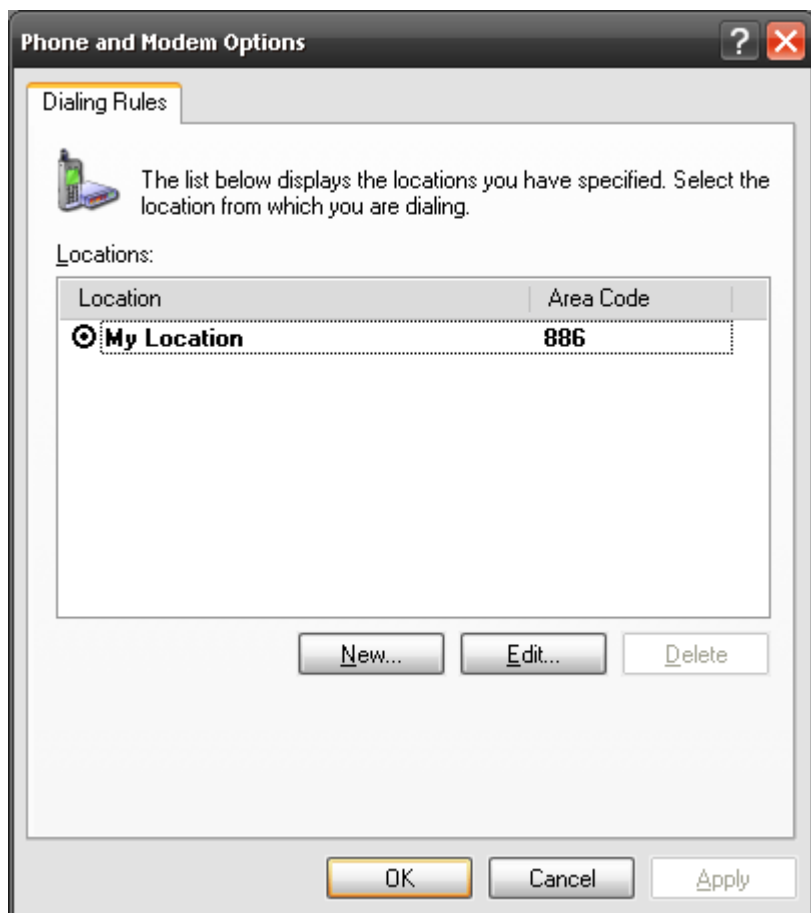
Terminal program

Use any suitable terminal program to change jammer's settings. For example, it is possible to use **Hyper Terminal** included to Microsoft Windows XP.



The program will offer to input **Location Information** if started first time.

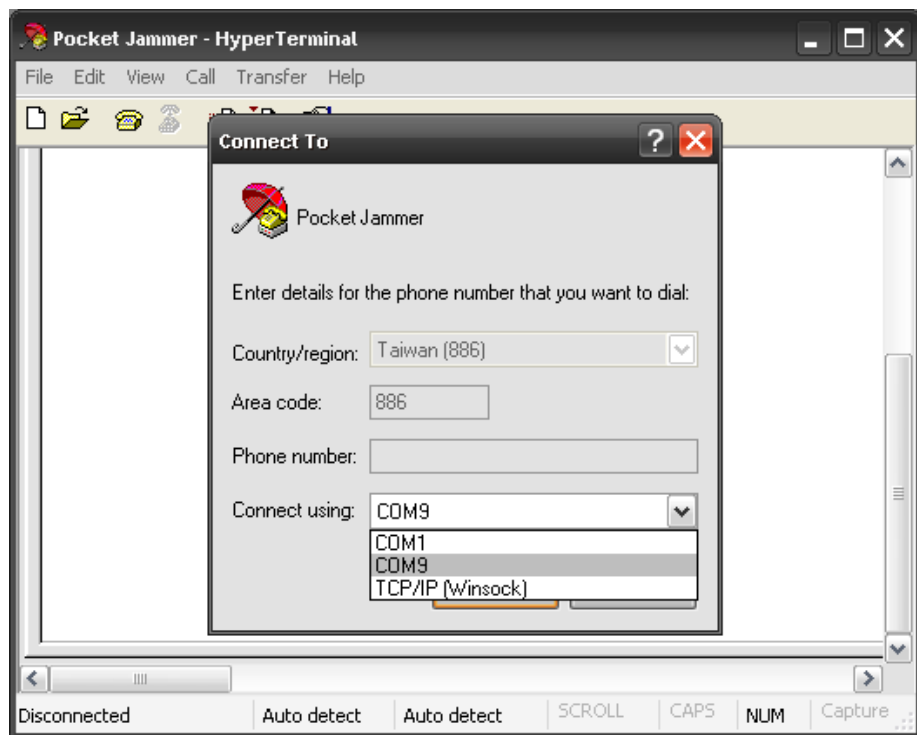




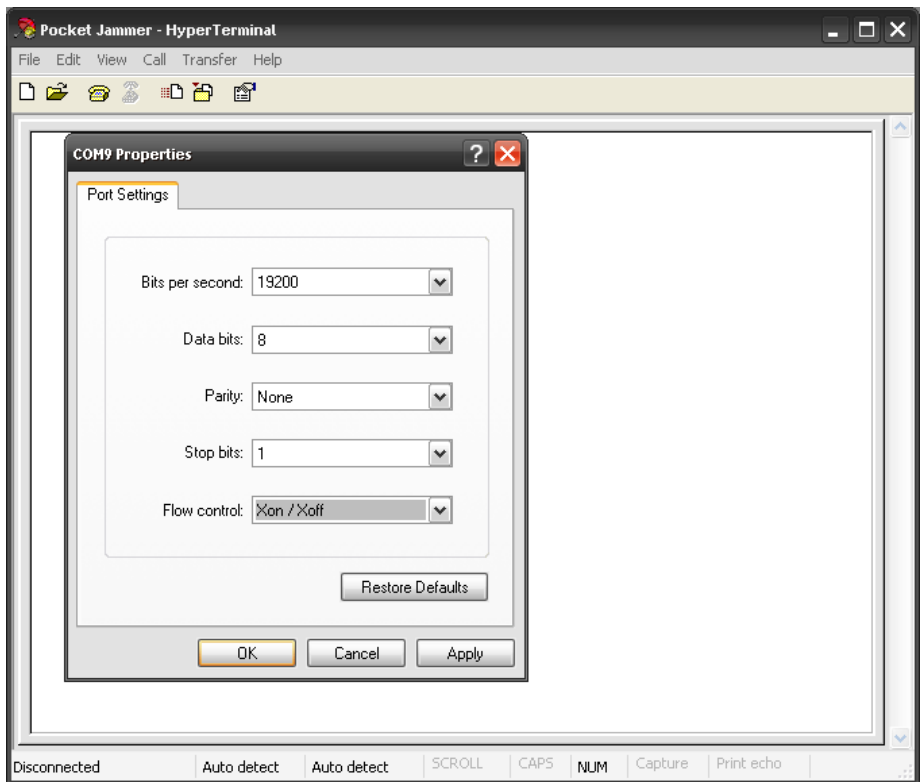
Make a new connection:



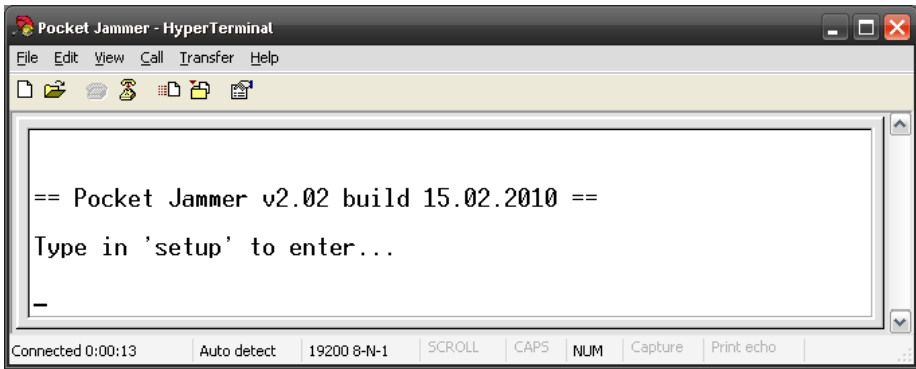
Select correct COM-port number:



Select correct port properties:



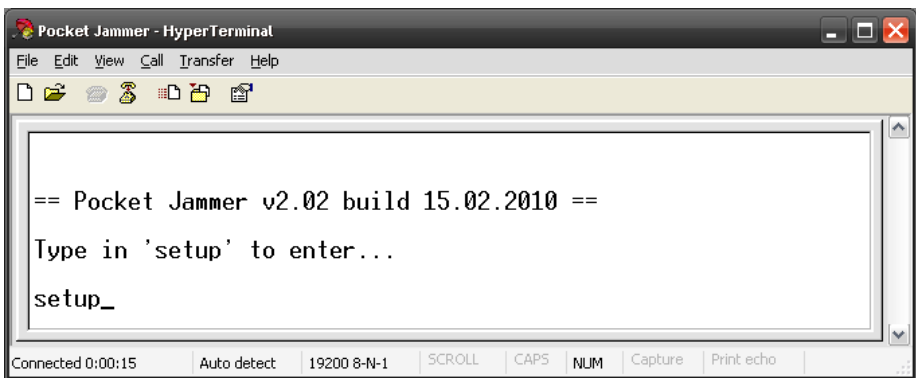
Switch on the jammer. Information about jammer firmware version will appear in terminal window:



```
== Pocket Jammer v2.02 build 15.02.2010 ==  
Type in 'setup' to enter...  
_
```

Enter to settings

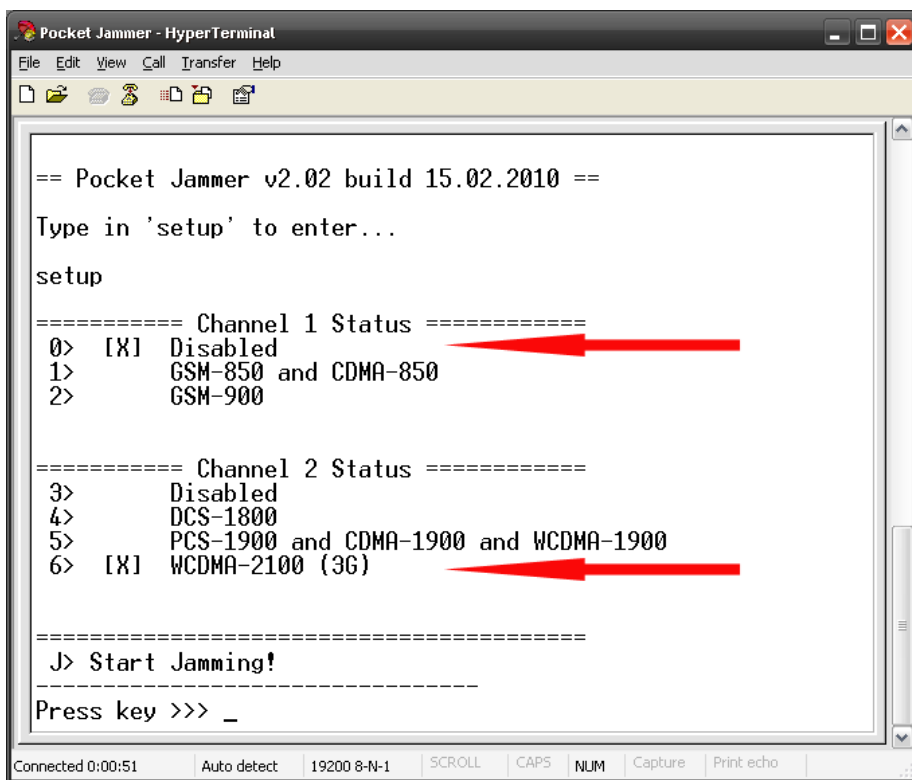
Type in “**setup**” and press **ENTER**:



```
== Pocket Jammer v2.02 build 15.02.2010 ==  
Type in 'setup' to enter...  
setup_
```

Jammer menu

The Menu will appear. It shows current frequency settings.



```
== Pocket Jammer v2.02 build 15.02.2010 ==
Type in 'setup' to enter...
setup
===== Channel 1 Status =====
0> [X] Disabled
1> GSM-850 and CDMA-850
2> GSM-900

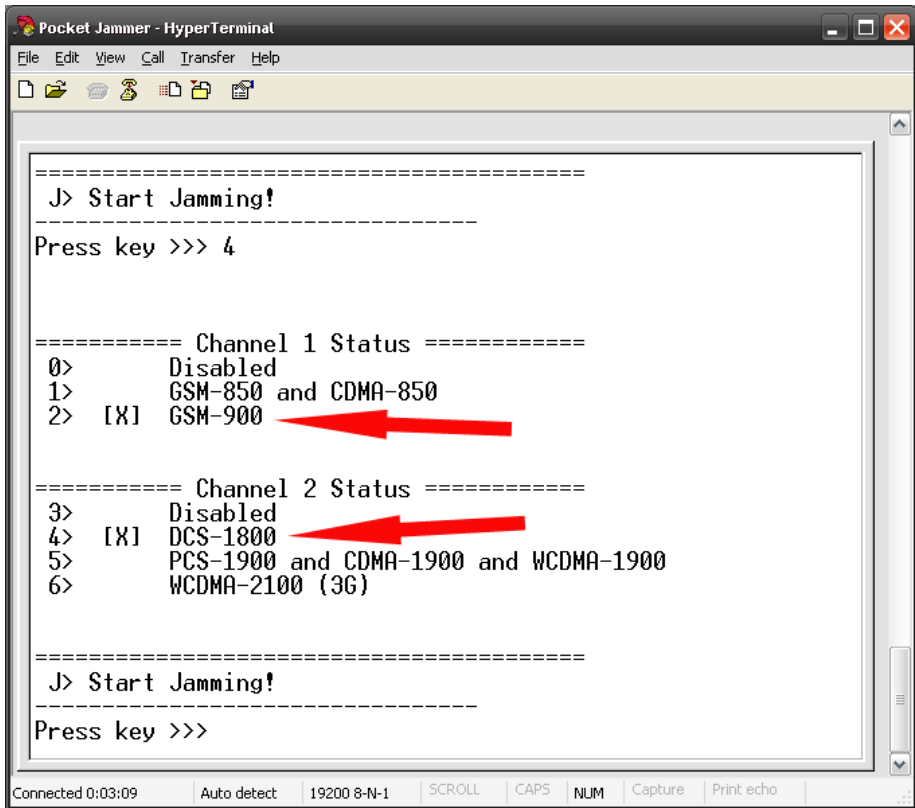
===== Channel 2 Status =====
3> Disabled
4> DCS-1800
5> PCS-1900 and CDMA-1900 and WCDMA-1900
6> [X] WCDMA-2100 (3G)

=====
J> Start Jamming!
-----
Press key >>> _
```

The symbol [X] means selected item. For example:

Channel 1 is **Disabled** and channel 2 is set to jam **3G** on the picture above.

Press key **0,1,2,3,4,5** or **6** to select desired frequency band to jam.



The screenshot shows a HyperTerminal window titled "Pocket Jammer - HyperTerminal". The menu bar includes File, Edit, View, Call, Transfer, and Help. The toolbar contains icons for file operations and communication. The main text area displays the following content:

```
=====
J> Start Jamming!
=====
Press key >>> 4

===== Channel 1 Status =====
0> Disabled
1> GSM-850 and CDMA-850
2> [X] GSM-900
=====

===== Channel 2 Status =====
3> Disabled
4> [X] DCS-1800
5> PCS-1900 and CDMA-1900 and WCDMA-1900
6> WCDMA-2100 (3G)
=====

J> Start Jamming!
=====
Press key >>>
```

Two red arrows point to the selected options: "[X] GSM-900" under Channel 1 Status and "[X] DCS-1800" under Channel 2 Status. The status bar at the bottom shows "Connected 0:03:09", "Auto detect", "19200 8-N-1", and buttons for SCROLL, CAPS, NUM, Capture, and Print echo.

Jamming of GSM-900 and GSM-1800 bands is selected on the picture above.

Press **j** to start jam with new settings.

